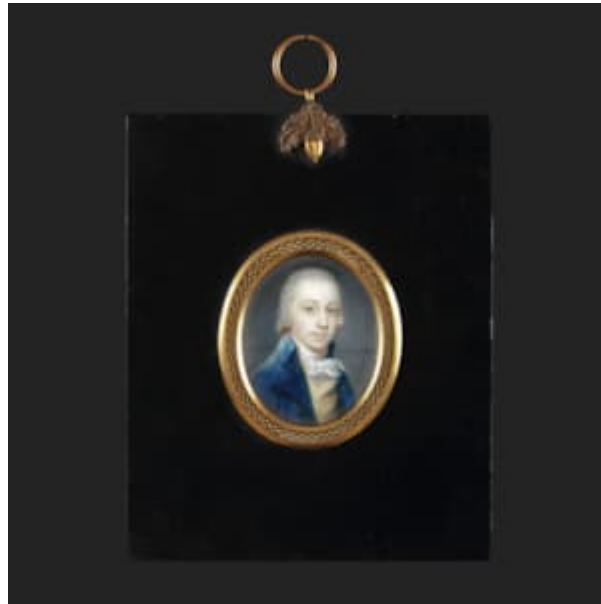


THE LIMNER COMPANY



WILLIAM GRIMALDI (1751 - 1830)

Portrait miniature of a Gentleman, wearing blue coat with yellow waistcoat and white stock and cravat

Circa: circa 1800

circa 1800

Watercolour on ivory (licence 11CKCV3W)

Oval, 56 mm (2 ½ in) high

Inscribed indistinctly verso

Papier-mâché frame with gilt-metal surround and foliate surmount

Alongside his copies of portraits by other artists, Grimaldi produced a series of original portraits, of which the present work is a fine example. Many of these were painted around 1800, allowing this portrait to be dated to this period. It has not been possible to identify the gentleman here, and the only information that may be associated with him can be found on a fragment of an old label attached verso, which reads '...smiling face and... kind stratagem', followed by an indistinguishable inscription.

The fact that this portrait is original allows Grimaldi's own hand to shine through; his colours are often light and applied thinly, leaving an almost translucent appearance to his sitter's faces. This technique also adds liveliness to the gentleman's clothing, especially the bow of his cravat, which appears to be balancing on the lapel of his waistcoat.

This work is also rather smaller than many others painted by Grimaldi, and is more of a 'traditional' portrait miniature than his larger copies on enamel and ivory. He likely painted in this manner as it is what many of his clients wanted and expected when commissioning a portrait miniature at this time. Some of the initials on the reverse of the miniature indicate that it remained within the family's collection until the late 19th century, when it was sold.

